



Foundation

Call for Proposals World Risk Poll 2021: A Changed World?

Perceptions and experiences of risk in
the Covid Age



lrfworldriskpoll.com

[@LR_Foundation](https://twitter.com/LR_Foundation) // [#WorldRiskPoll](https://twitter.com/WorldRiskPoll)

Lloyd's Register Foundation

- An independent global charity with a mission to **engineer a safer world**
 - Unique structure and sole shareholder of Lloyd's Register Group
 - Work to reduce risk and enhance the safety of critical infrastructure
 - Award grants and support work which helps us deliver our charitable mission
 - Aim to improve safety through interventions that are driven by evidence of what works
- We focus on the biggest safety challenges: Safety at sea, safety of digital systems, safety for a sustainable future, safety of food, skills for safety, safety of physical infrastructure, public understanding of risk.

The Lloyd's Register Foundation World Risk Poll

- 121 countries, 125000 interviews
 - Assessing perception and experience of risk
 - In places where little or no official data on safety exists
 - Disaster resilience, violence & harassment at work, data privacy & artificial intelligence
- 2019 > 2021
 - Build on existing data
 - What changed, and what didn't?
 - Impact of Covid-19 on people's sense of safety



World Risk Poll 2019 Projects

GLOBAL PEACE INDEX 2021

World Risk Poll data enhances Sedex's risk assessment tool

Data from Lloyd's Register Foundation's World Risk Poll, with Sedex - a global membership organisation that supports companies in their operations and supply networks. Sedex provides a platform for companies to manage and improve working conditions. The poll asked 150,000 people in 142 countries questions about their perceptions of risk.

hsme
HEALTH & SAFETY MIDDLE EAST

LATEST ISSUE ARTICLES PRESS VIDEOS WEBINARS ADVERTISE ABOUT

NUS
National University of Singapore

Lloyd's Register Foundation Institute for the Public Understanding of Risk

United Nations Food Systems Summit 2021

Peace and Perceptions of Risk

World Happiness Report

The Role of Health & Safety in the Future of Human Capital

June 30, 2021 | Share: [G+](#) [Twitter](#) [Facebook](#) [LinkedIn](#)

Insights from psychology for climate change communications

Wändi Bruine de Bruin
University of Southern California

Funding: Lloyd's Register Foundation, National Science Foundation, USC Public Exchange

Global study into violence and harassment launches

18 Jul 2021 | [NEWS](#)

Lloyd's Register Foundation, ILO and Gallup launch global study into violence and harassment in the workplace.

Risk data re-imagined

World Risk Poll data on violence and harassment is brought to life in an illustrative video, created and designed by the Institute for the Public Understanding of Risk. It reveals gender differences in people's perceptions of risk and is featured in Chapter 5 of the World Risk Poll Report.

[Download the World Risk Poll Report](#)

Advances in Nutrition




Water Security and Nutrition: Current Knowledge and Research Opportunities

Joshua D Miller, Cassandra L Workman, Sarita V Pancharang, Gresham Sneegee, Ellis A Adams, Sara L Young, Amanda L Thompson

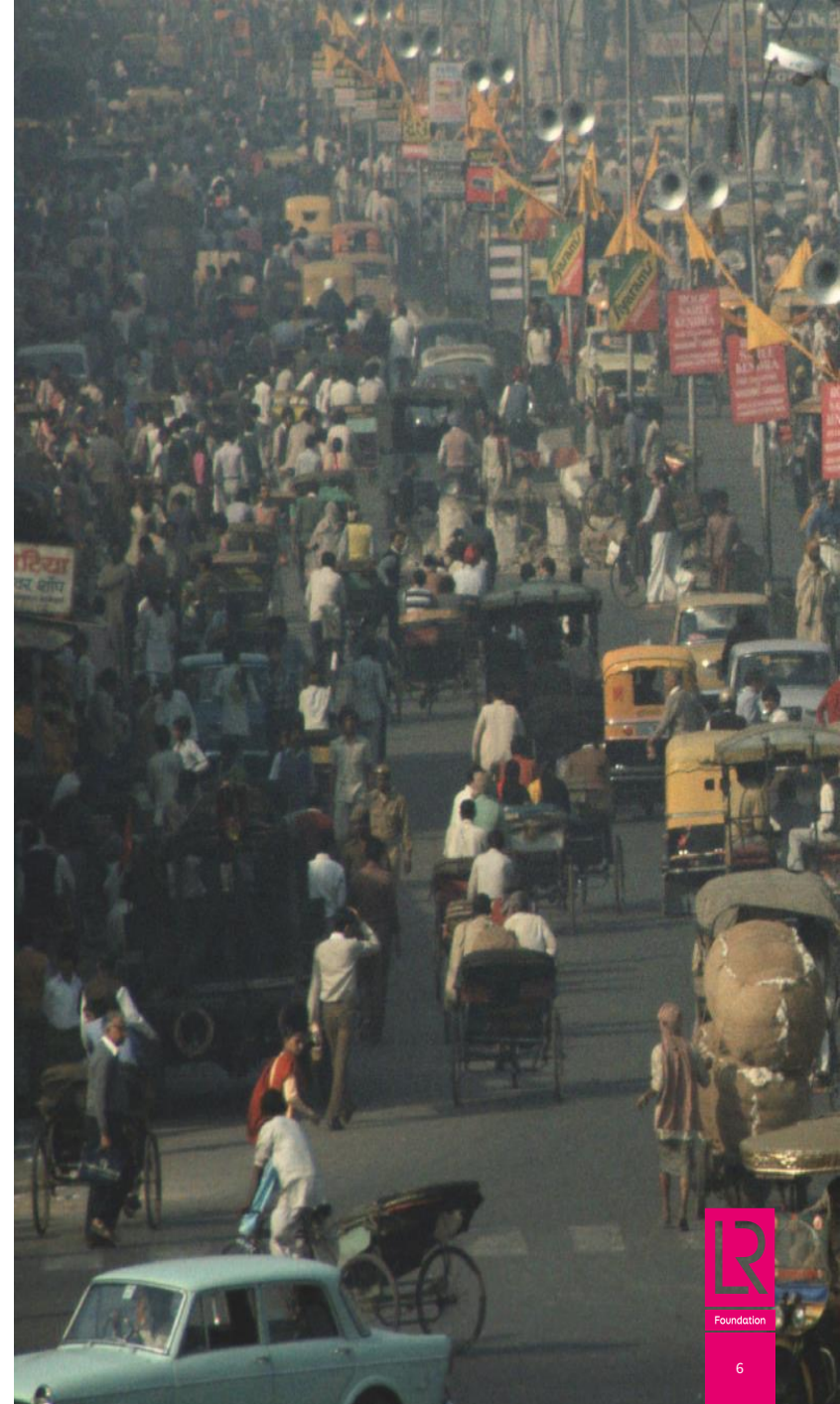
World Risk Poll 2021 - Call for Proposals

- Foundation strategic aim to maximise the impact of the Poll data
- First in a series of 4 calls linked to each 2021 World Risk Poll focus area
 - **Perceptions and experiences of risk in the Covid Age**
 - Global resilience - perceptions and experiences of disaster preparedness
 - Perceptions of harm from AI and misuse of personal data
 - Violence and harassment at work
- Grant funding available for impactful research and interventions that utilise the Poll data and aim to improve global safety
- **Budget:** upper limit of **£250,000** for most projects but the Foundation may fund one larger, high impact project with a budget of up to **£750,000**.
- Deadline of 31/12/2022 for applications
- Prospective applicants must first register interest on Flexigrant

We face many different risks in our daily lives

Road-related accidents/injuries	13%  -5
Crime/violence	12%  -3
Personal health (non-Covid-19)	10%  +1
Covid-19	7%

Greatest risk to safety in your own words



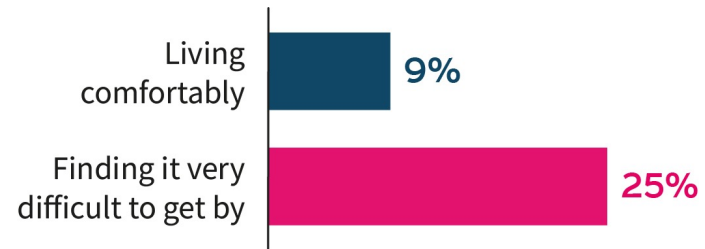
Globally, more people feel less safe than they did five years previously



How safe do you feel compared to five years ago?



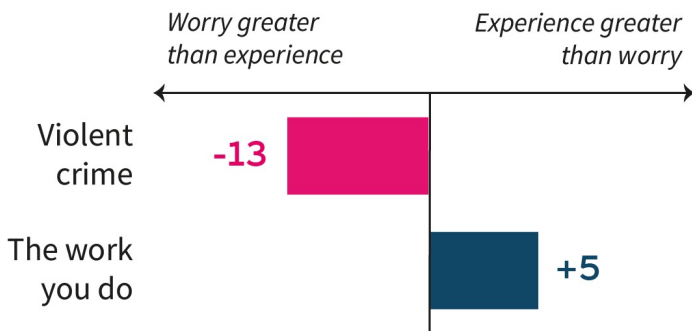
People on low incomes experience more serious harm at work



Have you or someone you know experienced serious harm from the work you do?



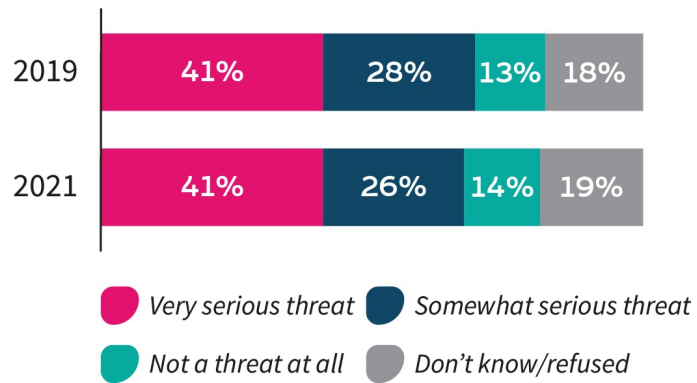
We can use the worry and experience gap to improve safety



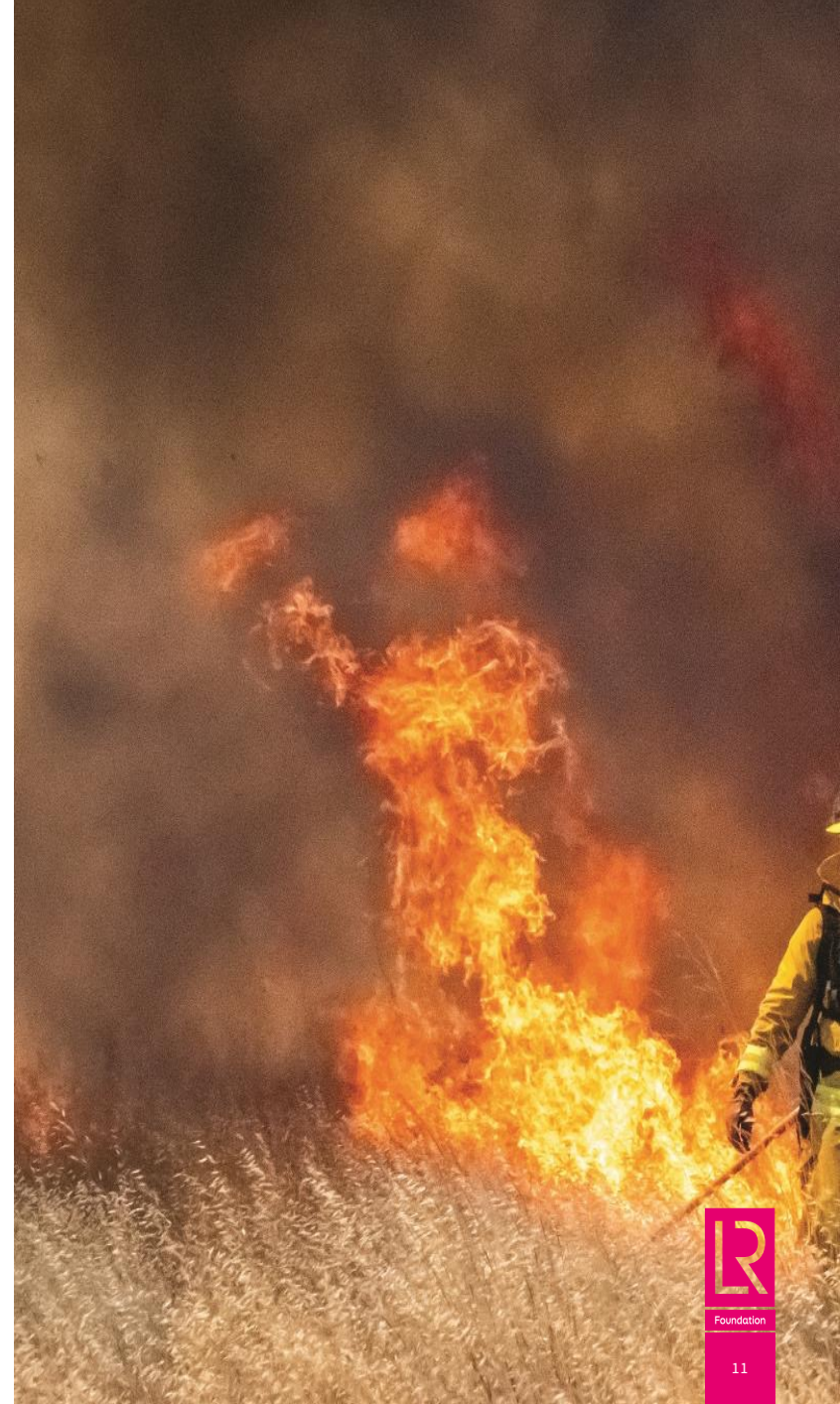
Have you, or someone you know, experienced serious harm from...
How worried are you that... could cause you serious harm



Climate change perceptions unchanged – in spite of competing risks



Do you think that climate change is a threat?





Foundation

Questions



Foundation

lrfworldriskpoll.com

Explore the poll – stories and visual snapshots

Download the full dataset

Apply for funding to turn the World Risk Poll into action

Queries to worldriskpoll@lrfoundation.org.uk

World Risk Poll 2021: A Changed World?
 Do you feel more safe, less safe or about as safe as five years ago?

Response	Percentage
More safe	10%
About as safe	40%
Less safe	48%

What is the greatest source of risk to your safety in your daily life?

Risk Source	Percentage
Drinking water	21%
Food safety	18%
Health care	15%
Electricity	12%
Transportation	10%
Other	8%
Financial	7%
Climate	6%
Other	5%
Other	4%
Other	3%
Other	2%
Other	1%

How worried do you feel that the following could cause you serious harm?

Item	Very worried	Somewhat worried	Not worried	Very worried - global average
The food you eat	45%	45%	10%	35%
The water you drink	40%	45%	15%	30%
Drinking water	40%	45%	15%	30%
Food in shops	35%	45%	20%	25%
Health care	30%	45%	25%	20%
The way you live	25%	45%	30%	15%

Have you, or someone you know, experienced serious harm from any of the following in the past two years?

Item	Yes	No	Very worried - global average
Drinking water	15%	85%	10%
Drinking water	15%	85%	10%
Food in shops	10%	90%	5%
Health care	10%	90%	5%
Work	5%	95%	2%

How serious a threat do you think climate change is to the people in this country in the next 20 years?

Response	Percentage
Very serious	45%
Serious	35%
Not serious	15%
Not a threat	5%

UKRAINE
 REGION: Eastern Europe
 INCOME LEVEL: Lower middle income
 SAMPLE SIZE: 1,000
 FIELD DATE: September 2021

BIGGEST CHANGES*
 Worry about government: +22%
 No harm: -22%

LR Foundation

lrfworldriskpoll.com

@LR_Foundation // #WorldRiskPoll

Appendix 1 - questions used in presentation

- Slide 3 – In your own words, what is the greatest source of RISK TO YOUR SAFETY in your daily life?
- Slide 4 – Overall, compared to five years ago, do you feel more safe, less safe, or about as safe as you did five years ago?
- Slide 5 – Have you or someone you PERSONALLY know, EXPERIENCED serious harm from any of the following things in the past TWO years? (Mental health issues, sever weather events such as floods or violent storms)
- Slide 6 – Have you or someone you PERSONALLY know, EXPERIENCED serious harm from any of the following things in the past TWO years? (Work)
- Slide 7 – Have you or someone you PERSONALLY know, EXPERIENCED serious harm from any of the following things in the past TWO years? (Violent crime, the work you do)
- Slide 7 – In general, how WORRIED are you that each of the following things could cause you serious harm? Are you very worried, somewhat worried, or not worried? (Violent crime, the work you do)
- Slide 8 - Do you think that climate change is a very serious threat, a somewhat serious threat, or not a threat at all to the people in this country in the next 20 years? If you don't know, please just say so.