

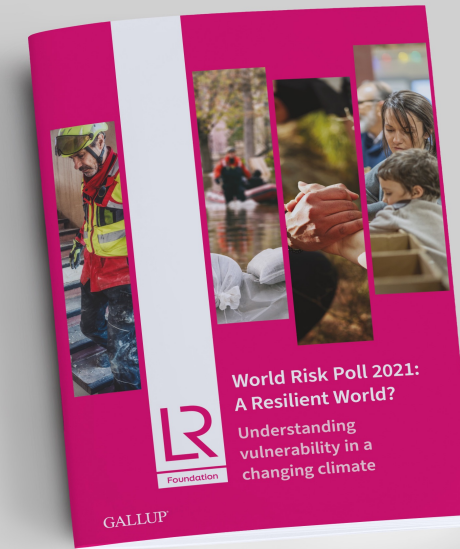


Foundation

# Call for Proposals (2 of 4)

## World Risk Poll 2021: A Resilient World?

Understanding vulnerability in a  
changing climate



[lrfworldriskpoll.com](http://lrfworldriskpoll.com)

[@LR\\_Foundation](https://twitter.com/LR_Foundation) // [#WorldRiskPoll](https://twitter.com/WorldRiskPoll)

# Lloyd's Register Foundation

- An independent global charity with a mission to **engineer a safer world**
  - Unique structure and sole shareholder of Lloyd's Register Group
  - Work to reduce risk and enhance the safety of critical infrastructure
  - Award grants and support work which helps us deliver our charitable mission
  - Aim to improve safety through interventions that are driven by evidence of what works
- We focus on the biggest safety challenges: Safety at sea, safety of digital systems, safety for a sustainable future, safety of food, skills for safety, safety of physical infrastructure, public understanding of risk.

# The Lloyd's Register Foundation World Risk Poll

- 121 countries, 125000 interviews
  - Assessing perception and experience of risk
  - In places where little or no official data on safety exists
  - Disaster resilience, violence & harassment at work, data privacy & artificial intelligence
- Resilience Index
  - Individual
  - Household
  - Community
  - Social



# World Risk Poll 2019 Projects

**GLOBAL PEACE INDEX 2021**

## World Risk Poll data enhances Sedex's risk assessment tool

Data from Lloyd's Register Foundation's World Risk Poll, with Sedex – a global membership organisation that supports companies to improve their practices in their operations and supply networks. Sedex uses the poll data to help companies to manage and improve working conditions. The poll asked 150,000 people in 142 countries about their experiences of working conditions.

**hsme**  
HEALTH & SAFETY MIDDLE EAST

United Nations Food Systems Summit 2021

**NUS** National University of Singapore  
Lloyd's Register Foundation Institute for the Public Understanding of Risk

## Peace and Perceptions of Risk

Stop Ratify

**World Happiness Report**

June 30, 2021 | Share: [e](#) [t](#) [f](#) [in](#)

## The Role of Health & Safety in the Future of Human Capital

**Lloyd's Register Foundation**

**USC** University of Southern California

## Insights from psychology for climate change communications

**Wändi Bruine de Bruin**  
University of Southern California

Funding: Lloyd's Register Foundation, National Science Foundation, USC Public Exchange

## Global study into violence and harassment launched

28 Aug 2021 **NEWS**

Lloyd's Register Foundation, ILO and Gallup launch global study into violence and harassment in the workplace.

## Risk data re-imagined

World Risk Poll data on violence and harassment is re-imagined in an illustrative video, created and designed by the Institute for the Public Understanding of Risk.

It reveals gender differences in people's experiences of violence and harassment in the workplace.

[Download the World Risk Poll Report](#)

**Advances in Nutrition**  
AN INTERNATIONAL SCIENCE JOURNAL

## Water Security and Nutrition: Current Knowledge and Research Opportunities

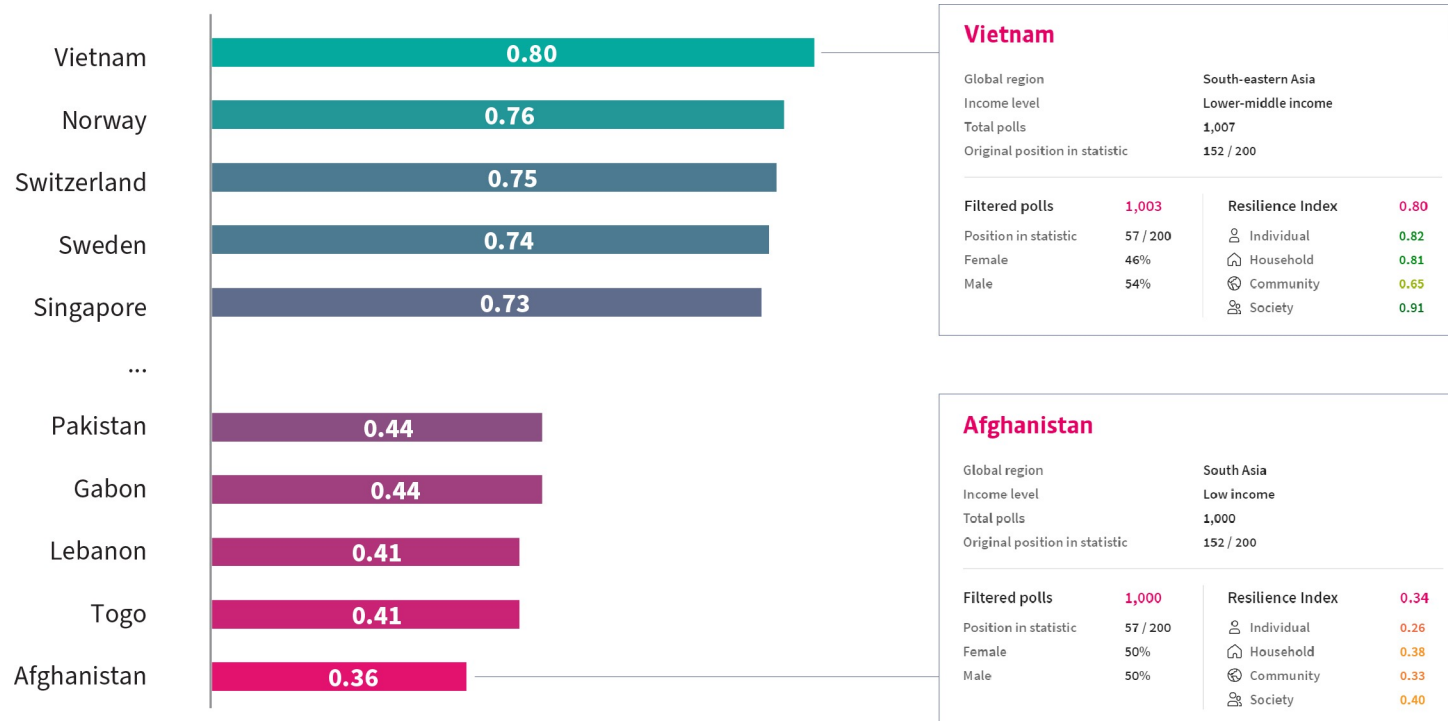
Joshua D Miller, Cassandra L Workman, Santa V Pancharang, Gretchen Sneegas, Ellis A Adams, Gene L Young, Amanda L Thompson



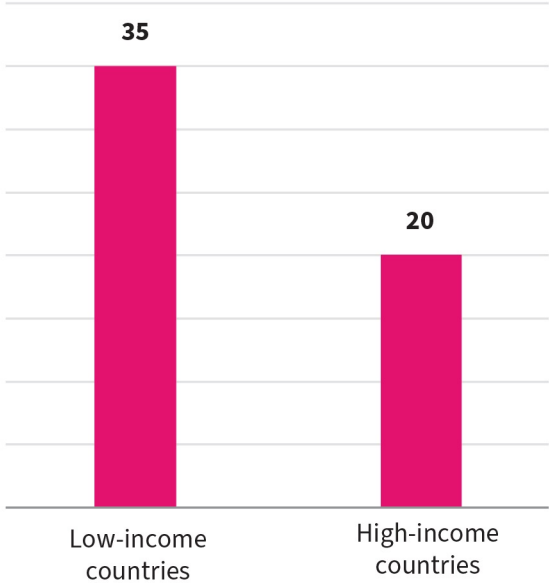
# World Risk Poll 2021 - Call for Proposals

- Foundation strategic aim to maximise the impact of the Poll data
- Second in a series of 4 calls linked to each 2021 World Risk Poll focus area
  - Perceptions and experiences of risk in the Covid Age (call [announcement](#))
  - **Global resilience - perceptions and experiences of disaster preparedness** (call [announcement](#))
  - Perceptions of harm from AI and misuse of personal data (expected end Nov)
  - Violence and harassment at work
- Grant funding available for impactful research and interventions that utilise the Poll data and aim to improve global safety
- **Budget:** upper limit of **£250,000** for most projects but the Foundation may fund one larger, high impact project with a budget of up to **£750,000**.
- Deadline of 31/12/2022 for applications
- Prospective applicants must first register interest on Flexigrant

# Resilience varies significantly at a global level

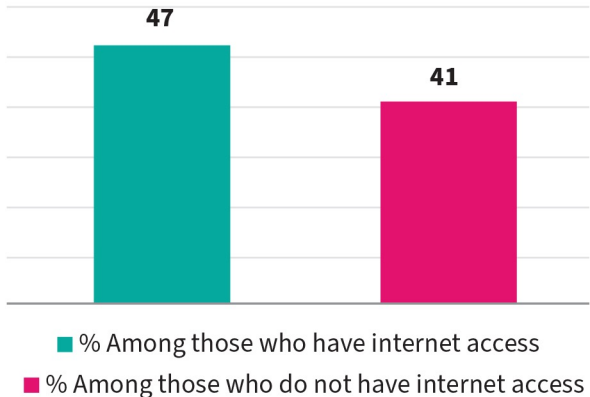


# Community support can compensate for lower resilience on other dimensions

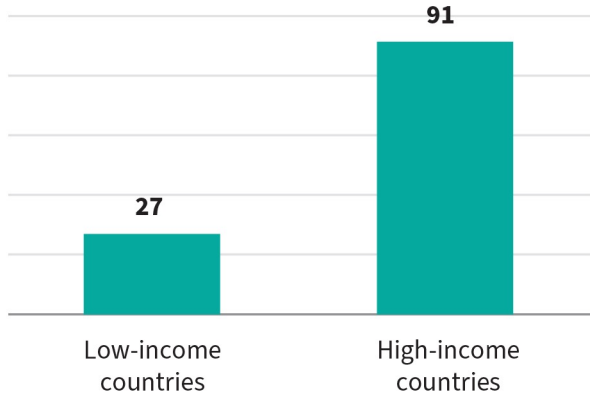


Percentage who believe their neighbours care about them 'a lot,' by World Bank country income group

# People with internet access feel more able to protect themselves



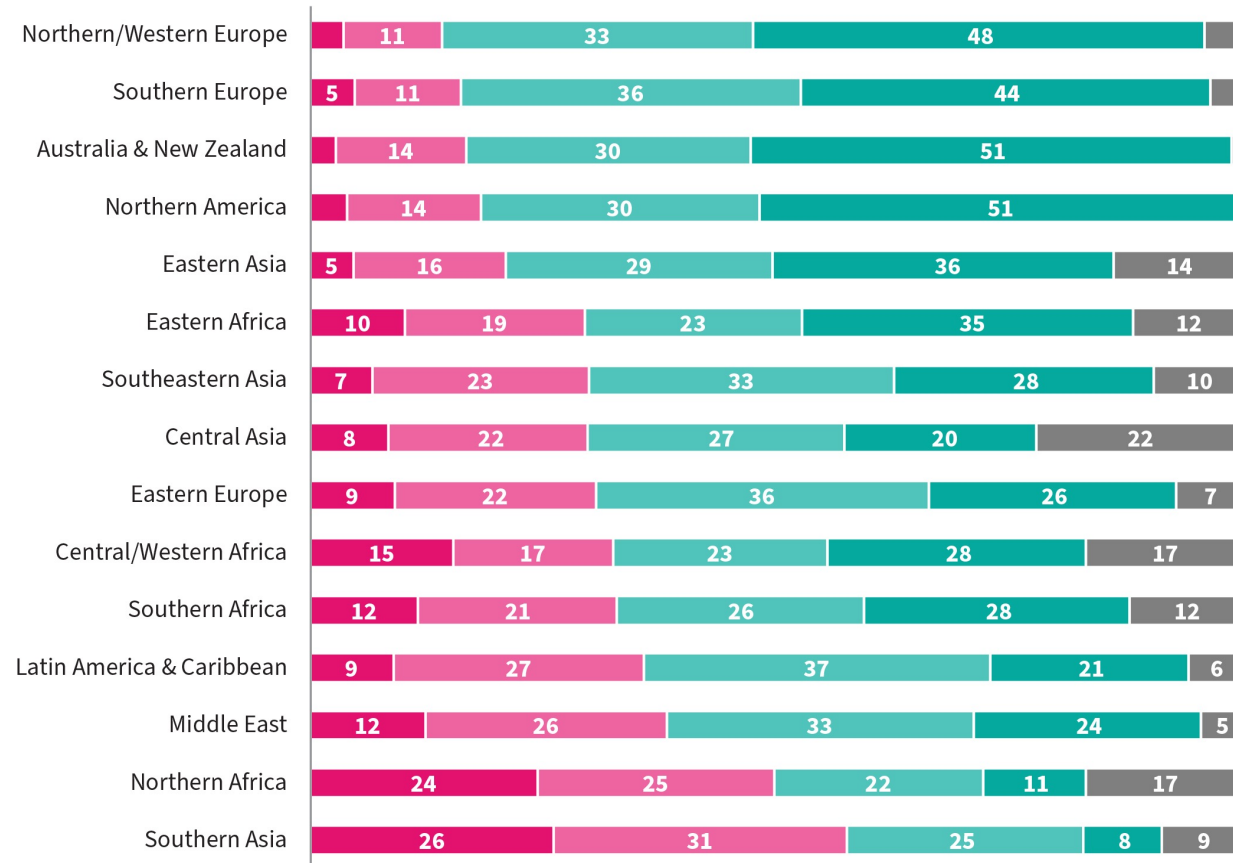
Percentage who believe they could protect themselves or their family in the event of a disaster, by internet access



Percentage who have internet access, by World Bank country income group

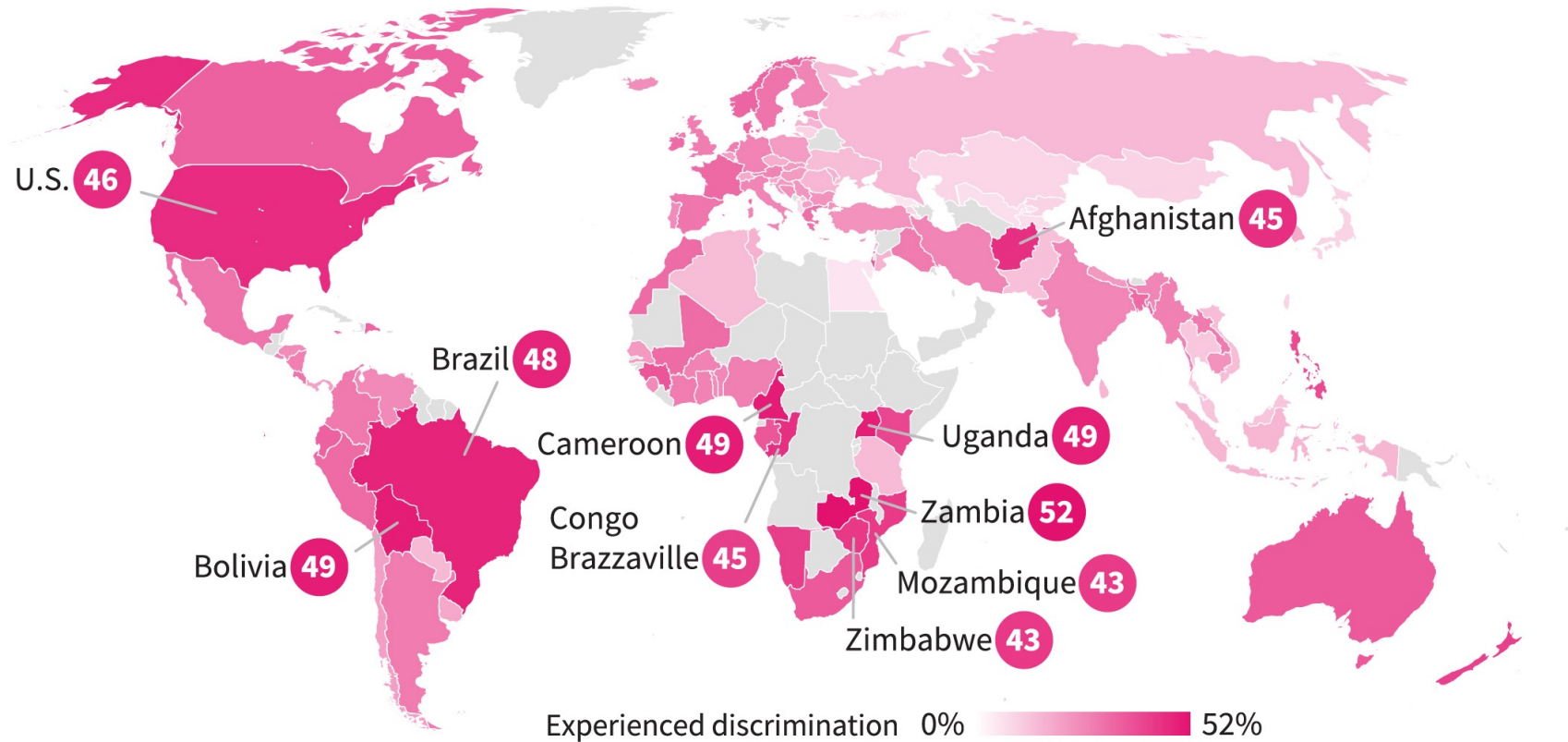


# New measure reveals global financial vulnerability



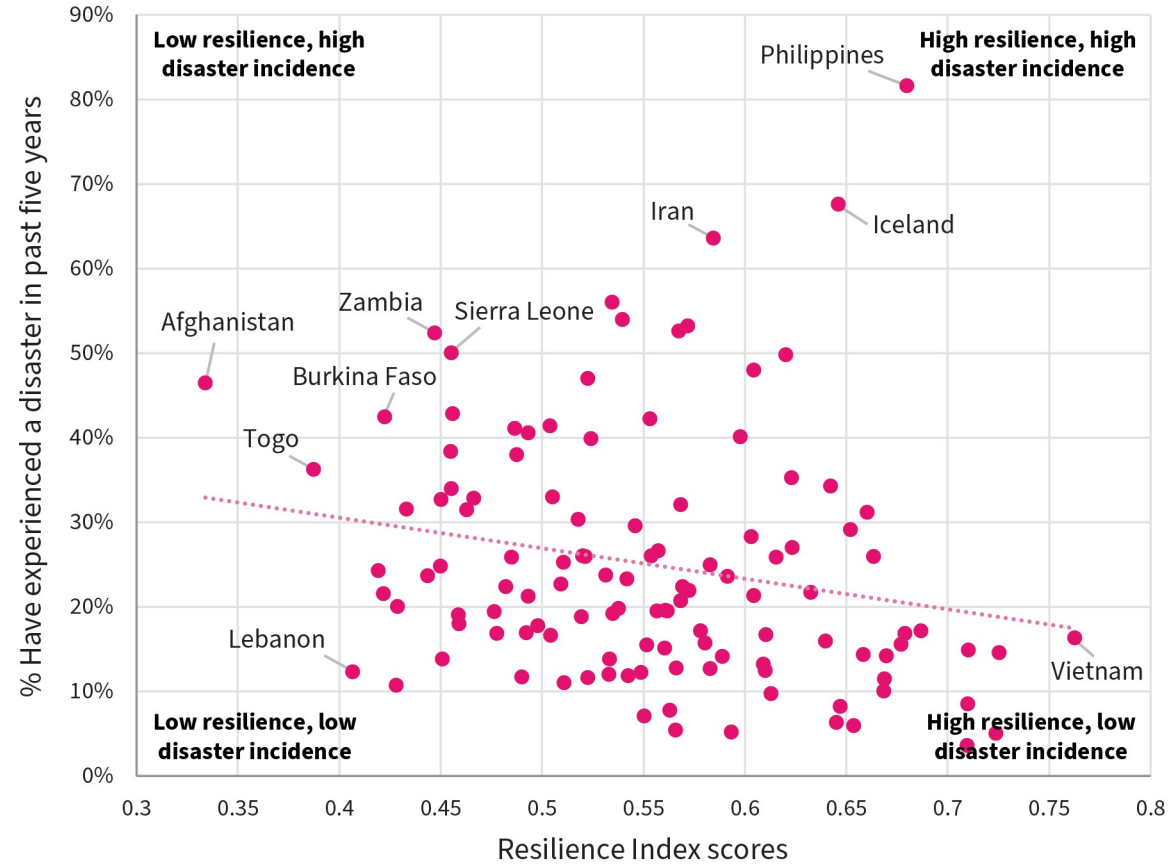
- % Less than a week
- % One week to less than a month
- % One month to three months
- % Four months or more
- % Don't know

# One in five globally has experienced discrimination



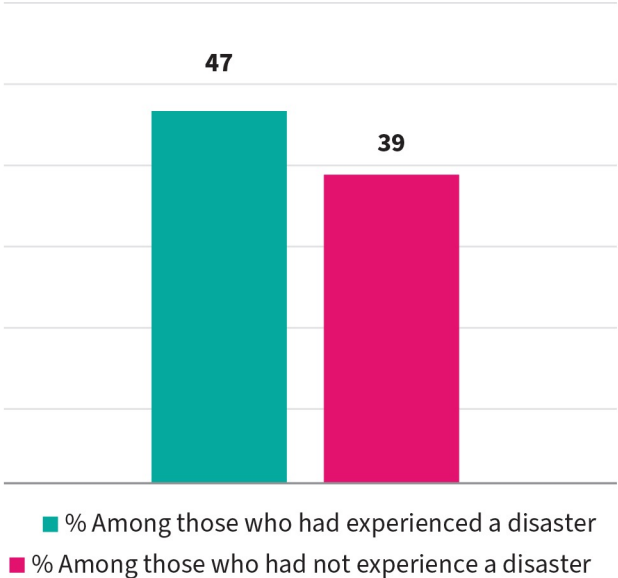
Percentage who had experienced discrimination based on one or more of five characteristics:  
skin colour, nationality/race/ethnicity, sex, religion, disability status

# Countries experiencing most disasters have low resilience index scores



Relationship between Resilience Index scores and the percentage in each country or territory who experienced disasters in the past five years

# Severe-weather events – a motivation for being prepared?



Percentage who said climate change was a 'very serious threat,' among those who had/had not experienced a disaster in the past five years



Foundation

# Questions



Foundation

# lrfworldriskpoll.com

Explore the poll – stories and visual snapshots

Download the full dataset

Apply for funding to turn the World Risk Poll into action

Queries to [worldriskpoll@lrfoundation.org.uk](mailto:worldriskpoll@lrfoundation.org.uk)



[lrfworldriskpoll.com](http://lrfworldriskpoll.com)

@LR\_Foundation // #WorldRiskPoll